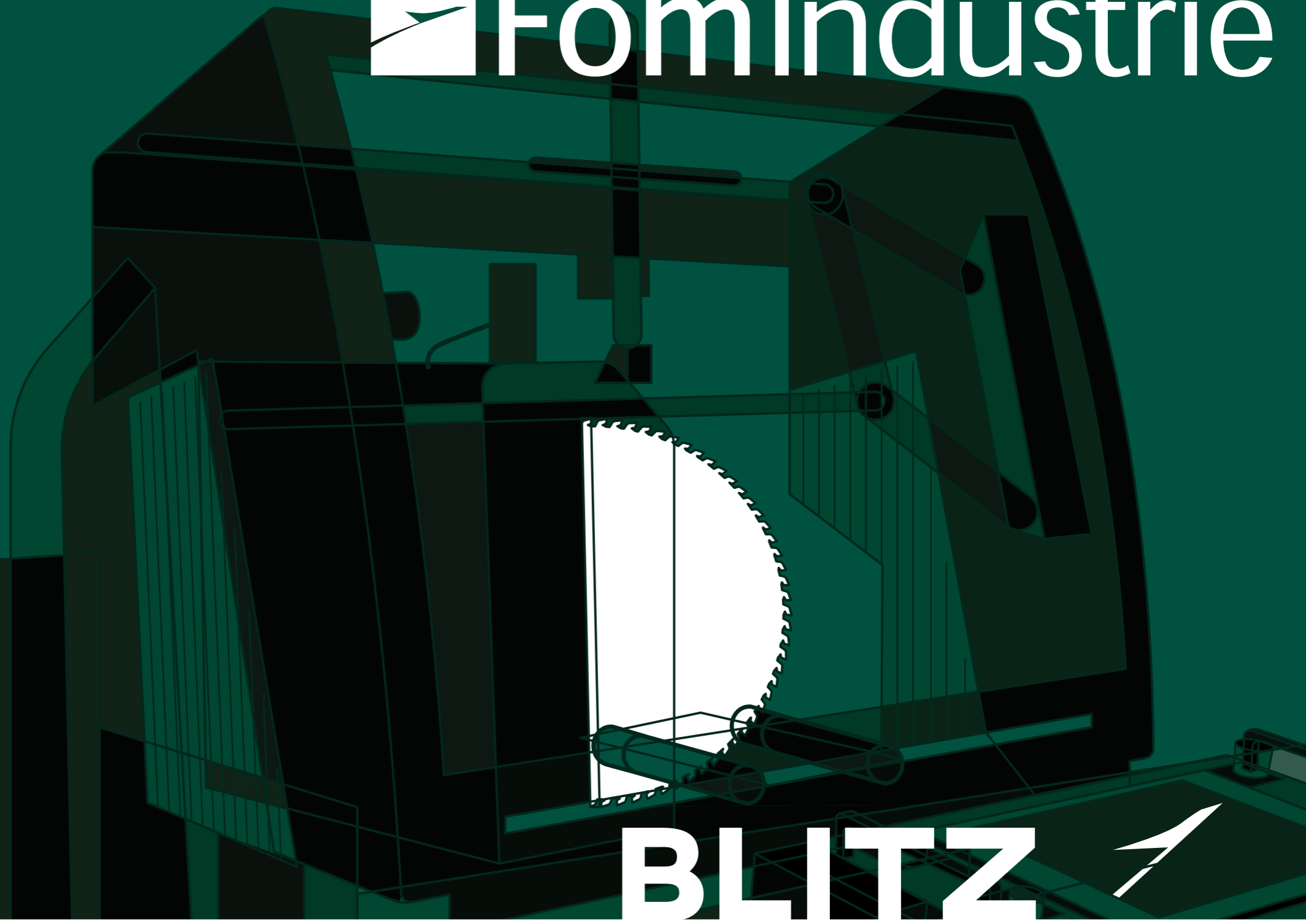




- FomIndustrie
- FomFrance
- FomChina
- FomIndia
- FomRussia
- FomRomânia
- FomUSA
- FomTurkey
- FomEspaña
- FomAsia
- FomLatinoAmérica
- Comall
- FST
- profteQ
- Rim
- TexComputer
- GrafSynergy
- BCR
- CIMAtech

Fom Industrie



BLITZ

BLITZ - 09/2022 - version 1.1



Via Mercadante, 85 - 47841 Cattolica (RN) - Italia
Tel +39.0541.832611 - Fax +39.0541.832615

info@fomindustrie.com

fomindustrie.com

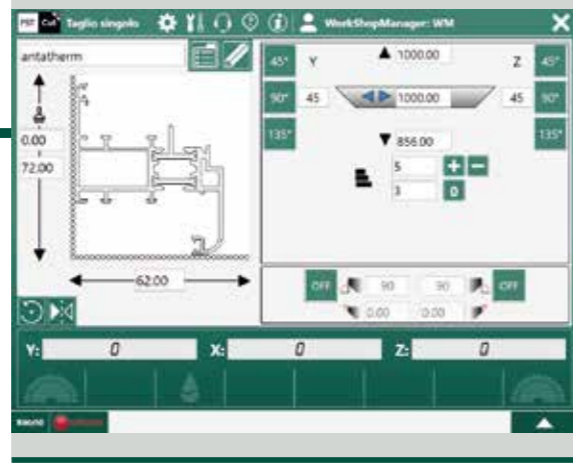


The specifications and illustrations in this catalogue are only guideline, FomIndustrie therefore reserves the right to make any modifications it deems necessary for technical or commercial reasons at any time and without prior notification.

BLITZ

Two-head sawing machine for aluminium and PVC with motor driven movement of the mobile head and electronically controlled head tilting.

Since 1980 Blitz has been synonymous with front blade sawing machines. The performance levels and reliability of Blitz are the result of state-of-the-art design choices. Blitz stands out for its inimitable ability to hold the profile firmly during cutting. While cutting, the blades push the profile against the steel table, working in synchronism with the patented vices. The motors are designed and made to Fom Industrie's R&D department specifications and have a power of 2.2kW (5.5kW in the case of the blade Ø 650mm). Available in 4 blade size versions and 2 length configurations.



FSTCUT4 is the innovative program managing all the operations that can be carried out by Fom sawing machines. Its simple, intuitive interface allows guided management of individual cuts as well as carrying out the cutting lists received from the office.



VICES

Quick, easy positioning of the vices in every direction. Whatever the cutting angle required, clamping takes place close to the blade. Four horizontal vices with **patented** two-way pusher system clamp the profile to the horizontal and vertical reference tables. Two vertical vices with direct pushing, which can be excluded automatically when cutting internal angles, guarantee clamping even on particularly tall profiles.

THE ELECTRONIC MEASURING DEVICE

transmits the profile height dimension to the control, which is thus able to compensate the extrusion tolerances automatically, ensuring compliance with the values required to give a perfect window frame. The position is read by tracing two points and with the aid of a vertical vice, so as to obtain a perfect measurement even in the presence of slight curves or bending in the bar.

ERGONOMIC POSITION

LOLA, our cloud based platform viewable from PC or mobile phone allows monitoring of machine status, machining statistics, state of machine components, scheduled and predictive maintenance.

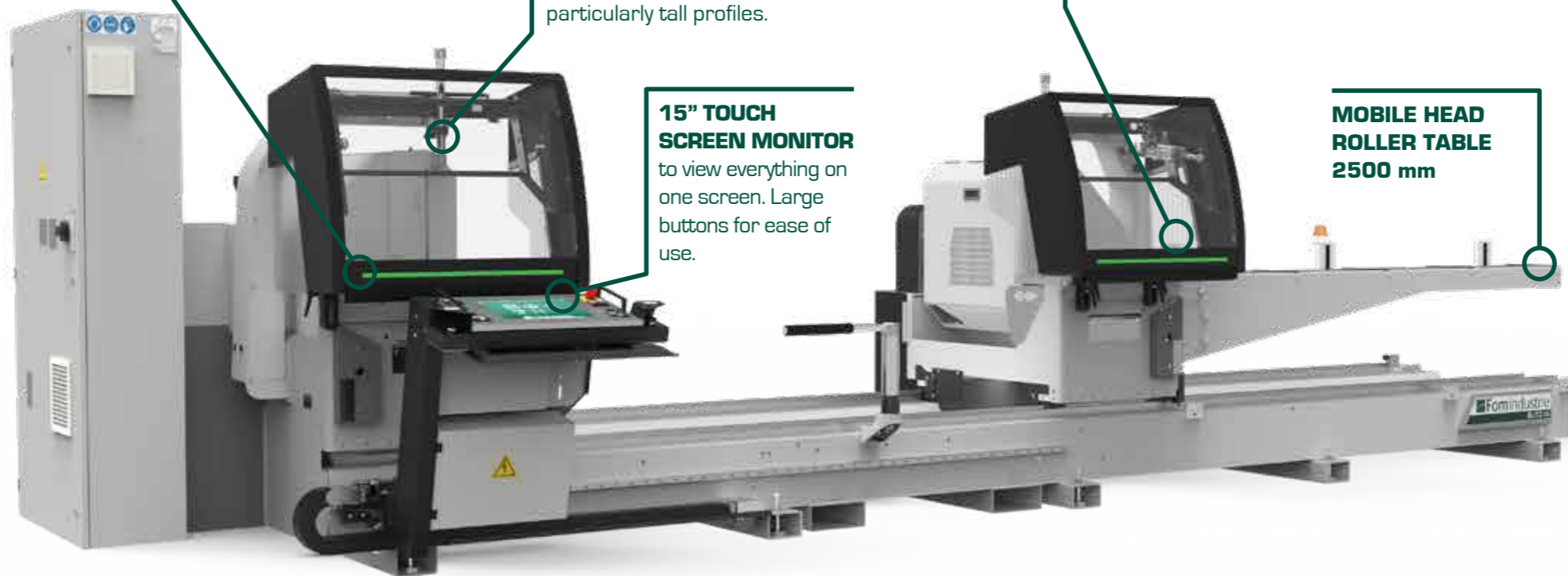


Machine state indicator **LEDs**.

15" TOUCH SCREEN MONITOR

to view everything on one screen. Large buttons for ease of use.

MOBILE HEAD ROLLER TABLE 2500 mm



STEP BY STEP CUTTING

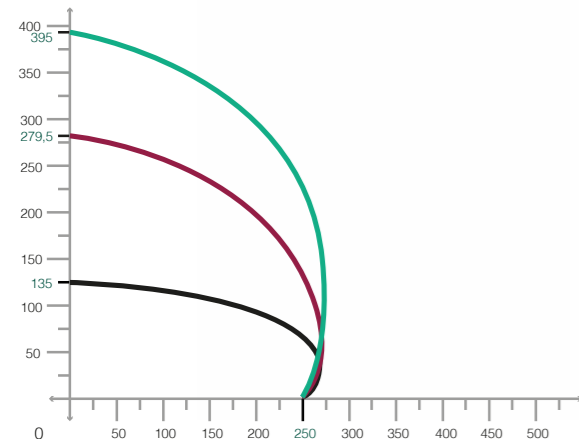
The step-by-step function can be activated for cuts carried out at the same angle [parallel cuts] with two-handed control. In this way there is an increase in production volumes when batches of the same piece are being produced.



Cutting capacity with tilting of heads compared to the horizontal axis

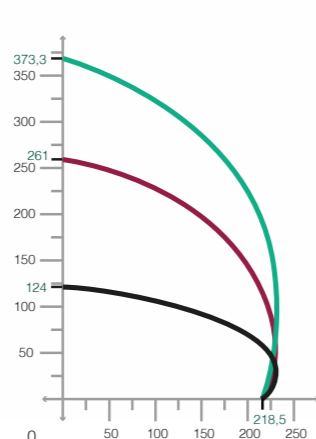
BLITZ 65

■ 20° ■ 45°/135° ■ 90°



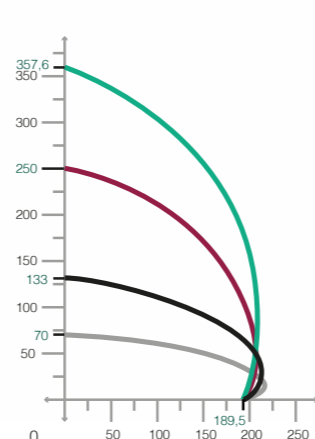
BLITZ 60

■ 20° ■ 45°/135° ■ 90°



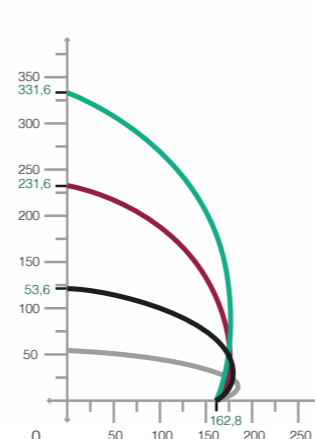
BLITZ 55

■ 12° ■ 22,5° ■ 45°/135° ■ 90°



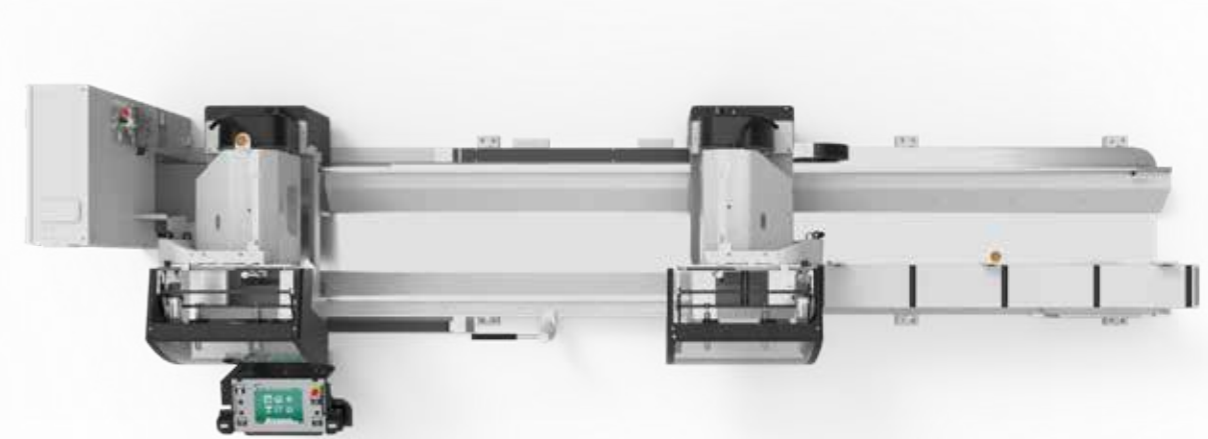
BLITZ 50

■ 10° ■ 22,5° ■ 45°/135° ■ 90°



AVAILABLE VERSIONS

5 m / 6,6 m



Evolved **DESIGN** to give optimum cleaning conditions during operation.