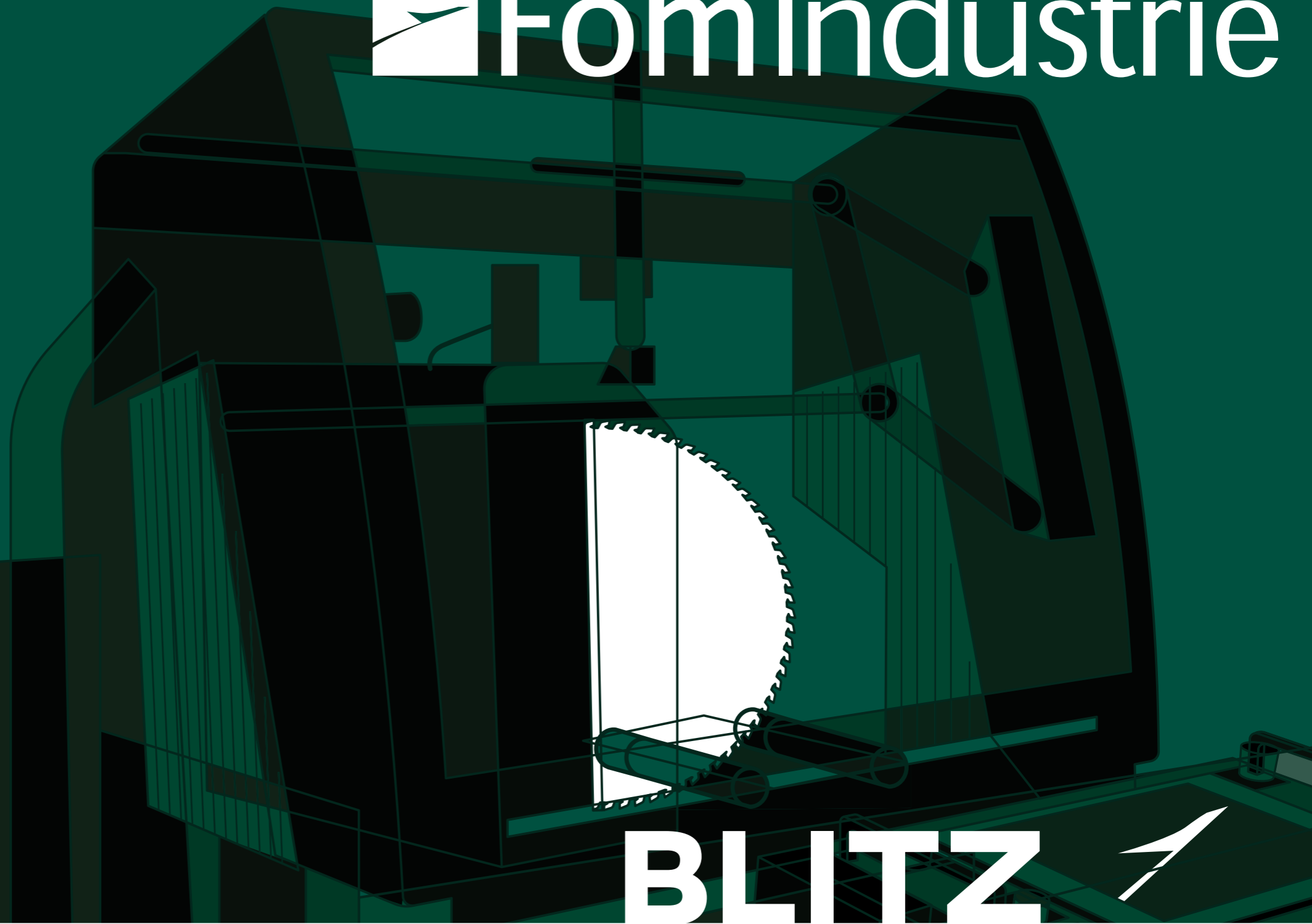




- FomIndustrie
- FomFrance
- FomChina
- FomIndia
- FomRussia
- FomRomânia
- FomUSA
- FomTurkey
- FomEspaña
- FomAsia
- FomLatinoAmérica
- Comall
- FST
- profteQ
- Rim
- TexComputer
- GrafSynergy
- BCR
- CIMAtech

Fom Industrie



BLITZ FW

BLITZ FW - 09/2022 - version 1.1



Via Mercadante, 85 - 47841 Cattolica (RN) - Italia
Tel +39.0541.832611 - Fax +39.0541.832615

info@fomindustrie.com

fomindustrie.com



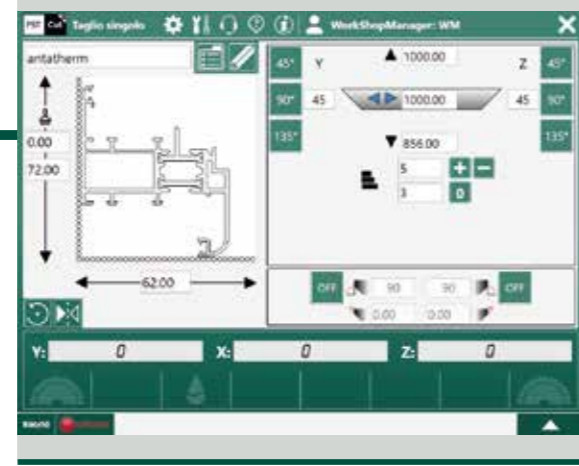
The specifications and illustrations in this catalogue are only guideline, FomIndustrie therefore reserves the right to make any modifications it deems necessary for technical or commercial reasons at any time and without prior notification.

BLITZ FW

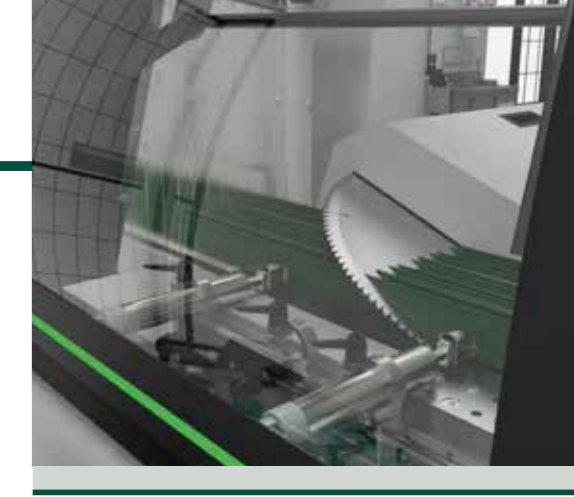
Two-head sawing machine for aluminium and PVC for automatic and semiautomatic cutting with motor driven movement of the mobile head and electronically controlled head tilting.

Since 1980 Blitz has been synonymous with front blade sawing machines. The performance levels and reliability of Blitz are the result of state-of-the-art design choices. Blitz stands out for its inimitable ability to hold the profile firmly during cutting. While cutting, the blades push the profile against the steel table, working in synchronism with the patented vices. Blitz FW responds to the requests to increase production volumes and decrease times with the automatic cutting functions. The motors are designed and made to Fom Industrie's R&D department specifications and have a power of 2.2kW [5.5kW in the case of the blade Ø 650mm].

Available in 4 blade size versions and 2 length configurations.



FSTCUT4 is the innovative program managing all the operations that can be carried out by Fom sawing machines. Its simple, intuitive interface allows guided management of individual cuts as well as carrying out the cutting lists received from the office.



VICES

Quick, easy positioning of the vices in every direction. Whatever the cutting angle required, clamping takes place close to the blade. Four horizontal vices with **patented** two-way pusher system clamp the profile to the horizontal and vertical reference tables. Two vertical vices with direct pushing, which can be excluded automatically when cutting internal angles, guarantee clamping even on particularly tall profiles.

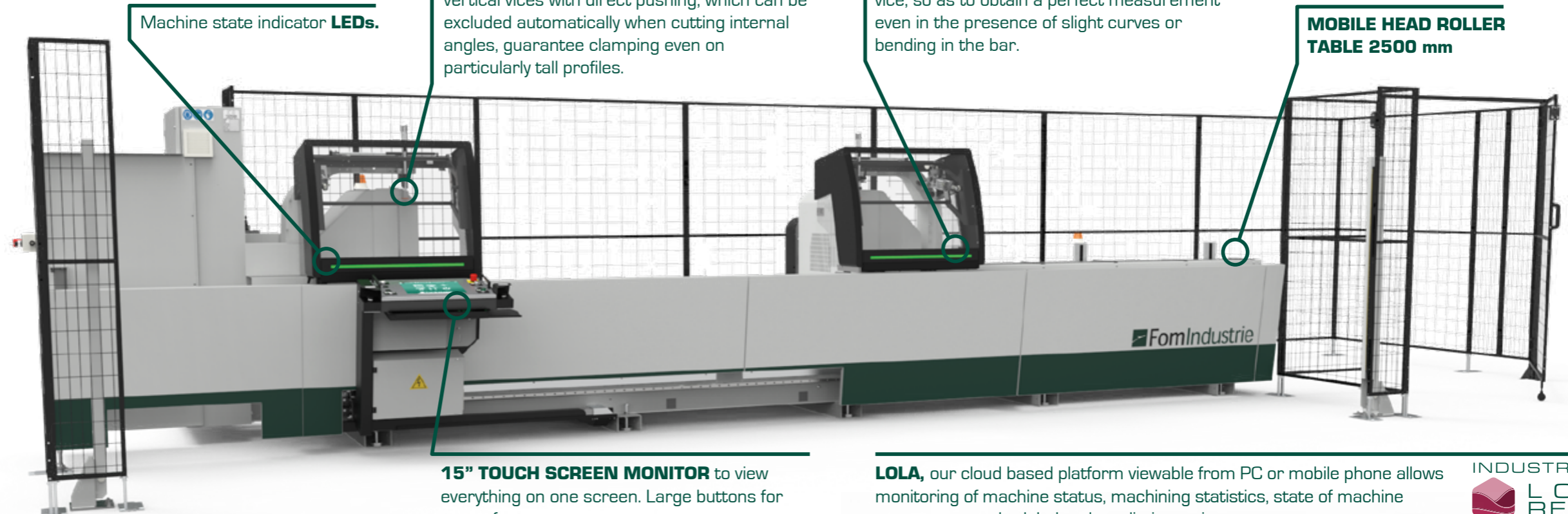
ELECTRONIC MEASURING DEVICE

The **ELECTRONIC MEASURING DEVICE** transmits the profile height dimension to the control, which is thus able to compensate the extrusion tolerances automatically, ensuring compliance with the values required to give a perfect window frame. The position is read by tracing two points and with the aid of a vertical vice, so as to obtain a perfect measurement even in the presence of slight curves or bending in the bar.

AUTOMATIC CUT

It is possible to carry out automatic cutting of fixed size pieces and, with the addition of special vices, cuts at variable angles. Fences and photocell barriers ensure the safety of unsupervised machining operations.

MOBILE HEAD ROLLER TABLE 2500 mm



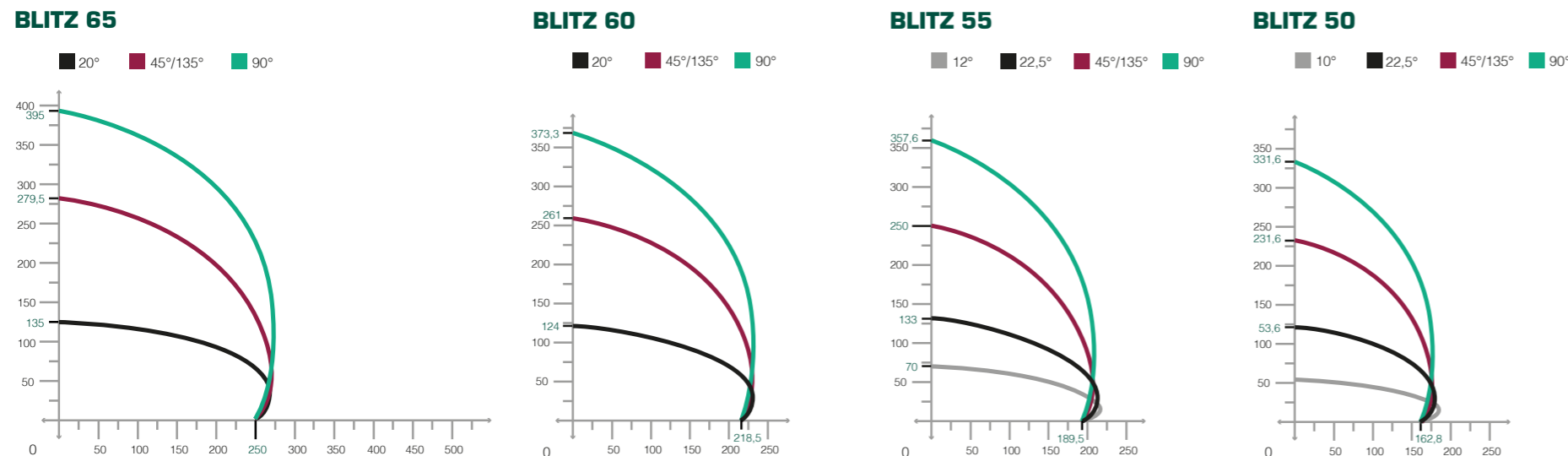
Machine state indicator **LEDs**.

15" TOUCH SCREEN MONITOR to view everything on one screen. Large buttons for ease of use.

LOLA, our cloud based platform viewable from PC or mobile phone allows monitoring of machine status, machining statistics, state of machine components, scheduled and predictive maintenance.



Cutting capacity with tilting of heads compared to the horizontal axis



AVAILABLE VERSIONS

5 m / 6,6 m

Evolved **DESIGN** to give optimum cleaning conditions during operation.

