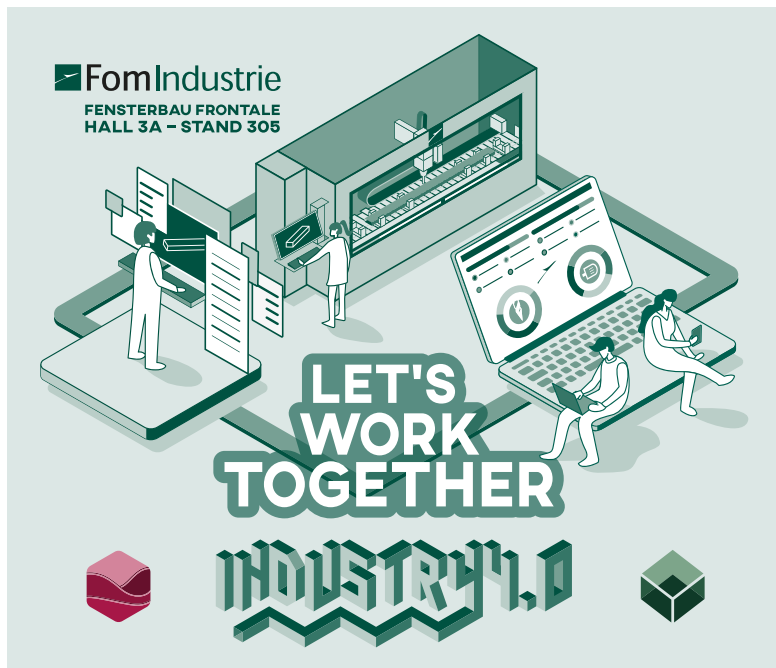


With an exhibition area of 600 m² Fom Group will be present at Fensterbau Frontale (**Hall 3A – Stand 305**) with a wide selection of products for the door and window frame market and for industry.



LET'S WORK TOGETHER!

The leitmotif in Fom Industrie products is collaboration.

We collaborate with our customers to offer exclusive standard options, so that plants can be enriched with systems that simplify the operator's work and streamline processes.

The growth in automation does not replace the contribution given by operators: it sets up a form of collaboration and mutual enhancement.

PRODUCTS ON DISPLAY

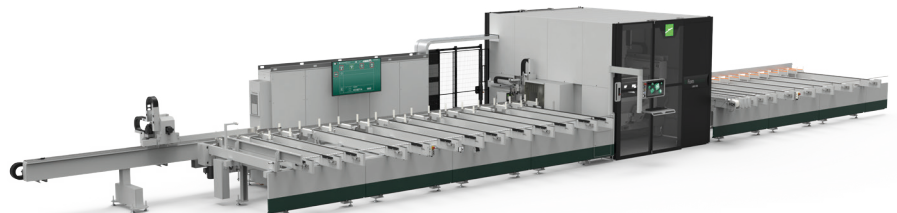
LMX650, fully automated plant for the production of machined and cut to measure elements using a multispindle work centre and a cutting machine driven on 4 controlled axes. According to its configuration the LMX650 can manage up to 50 driven axes controlled by the NC.

The plant on display presents, for the first time, 2 new devices:

X PUSH, automatic gripper change to switch from single profile cutting to cutting of profile packs.

- PATENTED -

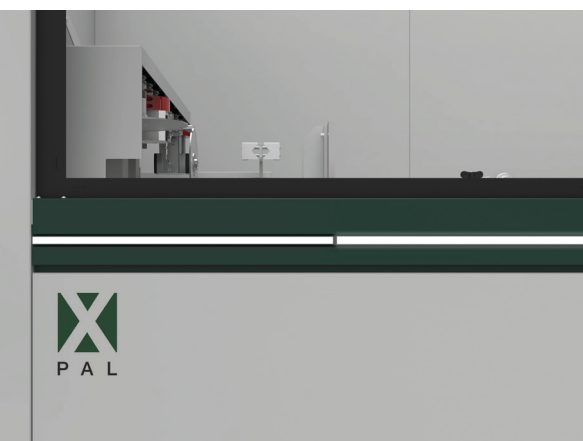
X PULL, extraction gripper with integrated suction. The gripper encourages rational filling of the unloading magazine, increasing working autonomy. The integrated suction means that cut pieces are already thoroughly cleaned and free from chips. - PATENT PENDING -



FMC SERIES 3, work centre with 4-axis working head to machine 180x270mm aluminium profiles.

FMC SERIES 4, work centre with 4-axis working head to machine 250x270mm aluminium profiles.

Both the centres on display at Frontale are equipped with the exclusive **X PAL** (Positioning Assistant Led) system. This is a multifunction LED bar that assists the operator when loading the bars and allows him to check the progress of machining operations at a glance. - PATENT PENDING -



BLITZ 65, double head sawing machine, fully enclosed version.

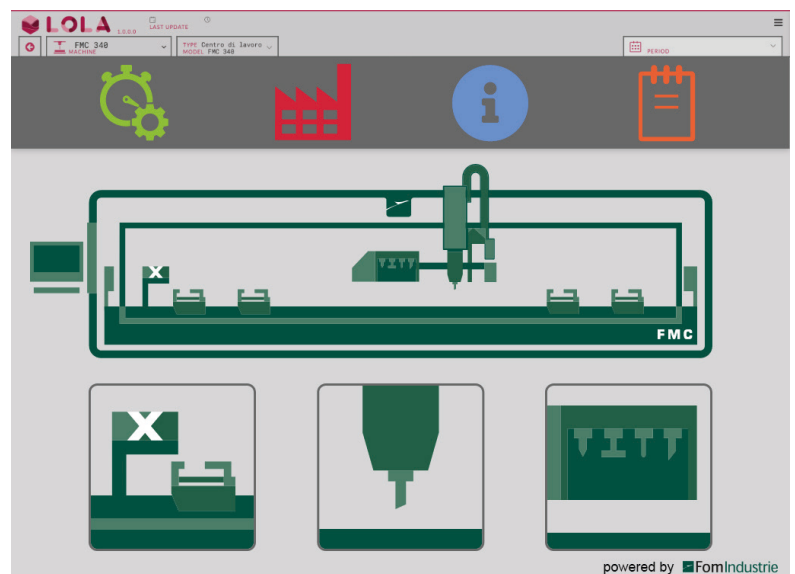


AXEL 5, work centre with 5 controlled axes.

INDUSTRY 4.0

LOLA, the web app developed by Fom Industrie for Industry 4.0, is **LIVE** on the machines exhibited in Nuremberg. The most recent version of LOLA allows intuitive browsing by machine groups.

Ipads are available for visitors to the stand to check out the mobile version of LOLA and obtain real time access to information on machine status, wear in components and predictive maintenance notifications.



#wearefom

FOM INDUSTRIE, born in 1972, is a leader in the fields of extruded aluminium cutting and machining. The company offers a range of high technology machine tools that is one of the broadest on the market. The range varies from automatic cutting and machining lines, to 3-4-5 axis work centres, thermal cutting lines, single and double head sawing machines and traditional machines.

With a turnover of approximately 170 million Euro and a staff of over 500 employees world-wide, the Fom group comprises 9 manufacturing companies, 9 commercial branches throughout the world and a network of 55 official distributors.